

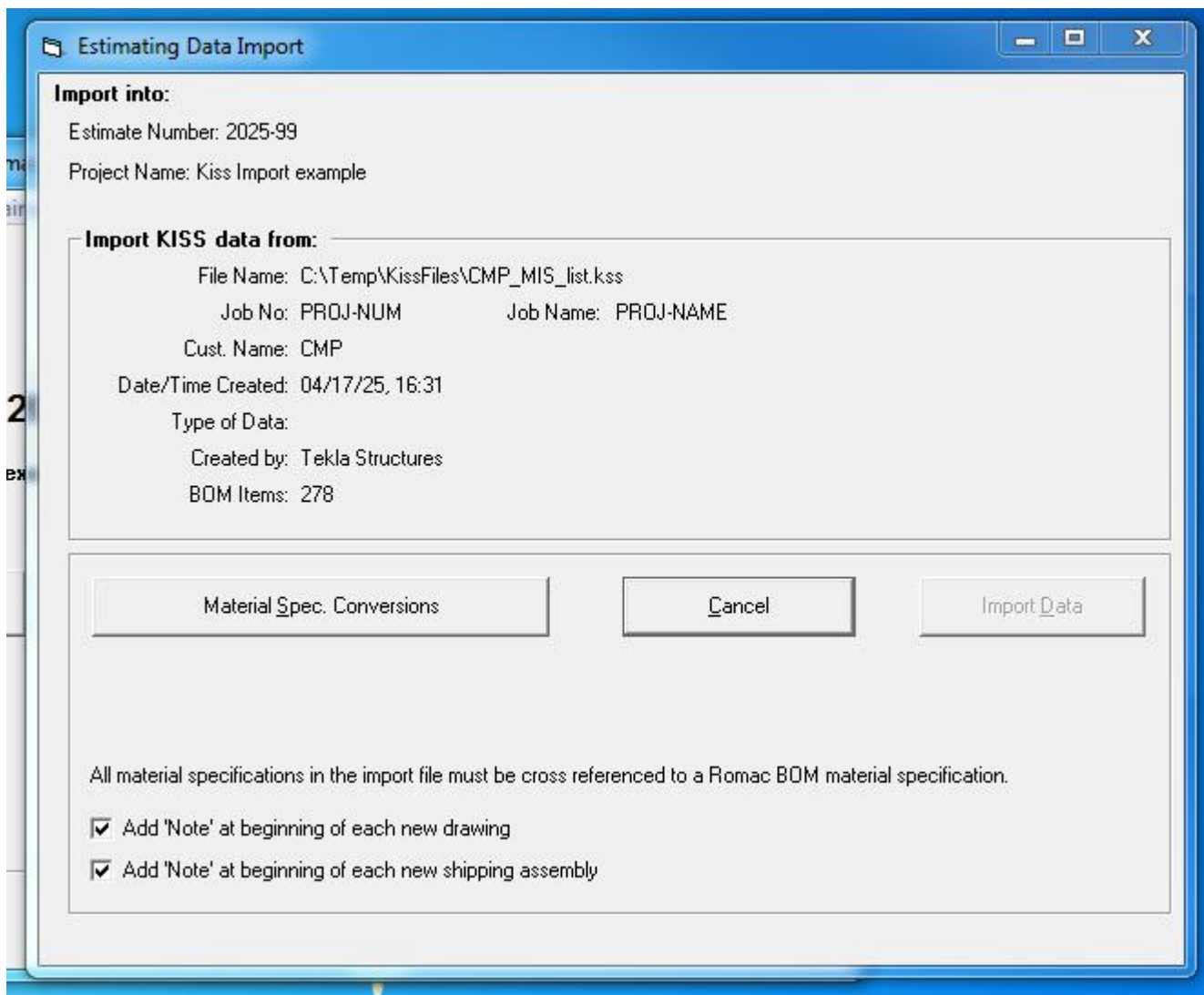
Import Kiss data into Romac Estimating V7.1

Kiss data can be imported into a new estimate or appended to an existing estimate. In either case, open the estimate you are importing kiss data into.

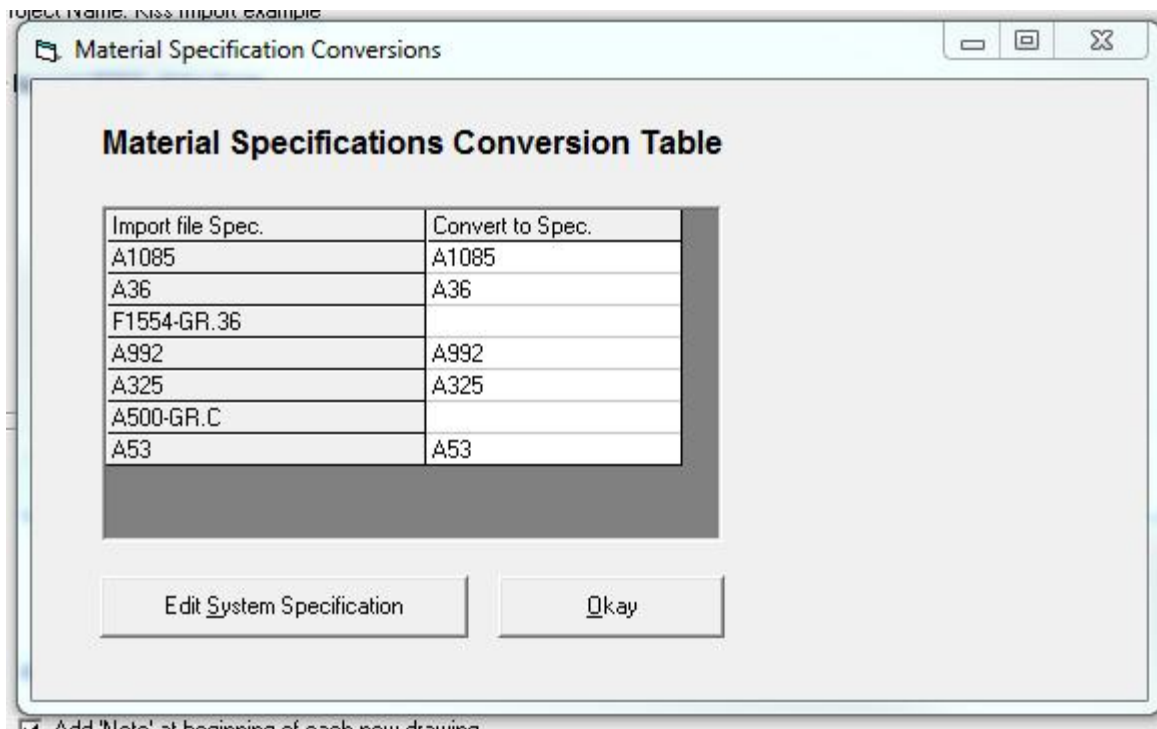
Select the Import Kiss Data option on the Tools menu selection. When the import screen is displayed, the “Edit KISS Shipping Descriptions” allows you to enter shipping descriptions that are not actual material such as BEAM, COLUMN, FRAME, STRINGER, etc. This is a onetime entry and will persist for future import.

To start the import process, click the “KISS format data” button. This will display a screen which allows you to select the kiss file you are importing. Note that the kiss file must be in a folder on the C: drive or on a letter drive such as D:, etc. It cannot be on a network drive, or the desktop. Downloads or Documents folder can be accessed from the c:\users folder.

Once the kiss file is selected, a screen as shown below will be displayed.



Usually, the material specifications in the kiss file do not match the Romac specifications. If the “Import Data” button is grayed, click the “Material Spec Conversions” button. This will display a screen that will allow you to match specifications from the kiss file to Romac specifications. In some cases you will need to add specifications to the Romac system.



If specifications do not match, you can click within the “Convert to Spec” column to select from a drop down list to select a specification. The “Edit System Specification” button can be used to add a specification to the Romac system. Once specification descriptions are matched, you can choose if you want to add a note at the beginning of each drawing and/or add a note at the beginning of each shipping piece.

Click the “Import Data” button to complete the import.